

Simulating a photo on a screen

Reason we do it:

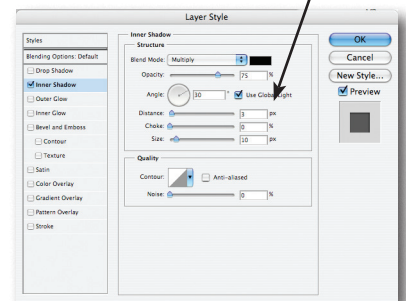
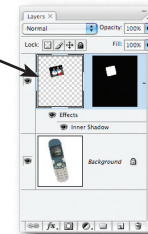
Cool effect for dominants, dividers and covers.

Method:

- Step 1: Open a photo with a screen in it and a photo with the subject you want to put on that screen. We are going to work on the screen photo first. In our case, we will use a computer screen.
- Step 2: Choose the pen tool. In the Options bar, make sure that Shape Layers is selected. (Figure A) This will create a vector shape on its own layer.
- Step 3: Click in the four corners of the screen to create a complete box. Make sure to click the fourth corner even though it may look like you don't need to.
- Step 4: Switch to the Add Anchor Point tool (it's under the Pen tool) and add anchor points midway on each side of the screen. (On some photos you will not need to do this step—only those with rounded screens.)
- Step 5: Switch to the Direct Select tool (under the Path Selection tool) and pull on the path points until they match the screen.
- Step 6: Hold down Control (Command-Mac) and click on Mask Thumbnail in the Layers panel to load it as a selection.
- Step 7: Delete the Vector Mask layer by dragging it to the Layer panel trash.
- Step 8: Go to your photo of things you want to put into the screen (in this case, our teacher's daughter).
- Step 9: Press Control (Command-Mac) A to Select All.
- Step 10: Press Control (Command-Mac) C to copy the selection.
- Step 11: Go back to your screen photo and choose Edit>Paste Into.
- Step 12: Press Control (Command-Mac) T to turn on Free Transform and rotate and/or resize the photo in the screen as needed. Remember to hold down the shift key to keep the photo in proper proportion if you are resizing it. When you are done, press Enter to finish.
- Step 13: Double click on the masked photo (Figure B) in the Layers panel to bring up Layer Styles.
- Step 14: In Layer Styles, choose Inner Shadow. Set the Distance at 3 and the Size at 10. (Figure C) Choose OK.
- Step 15: Click on the Layer Mask (Figure D) in the Layers panel and choose Filter>Blur>Gaussian Blur. Give your blur a radius of 2 pixels.
And that should just about do it. Save it as a TIFF or JPEG to upload to YTO or to place in InDesign.



Before



After

